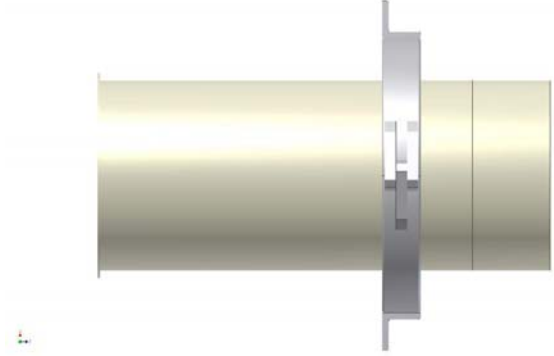


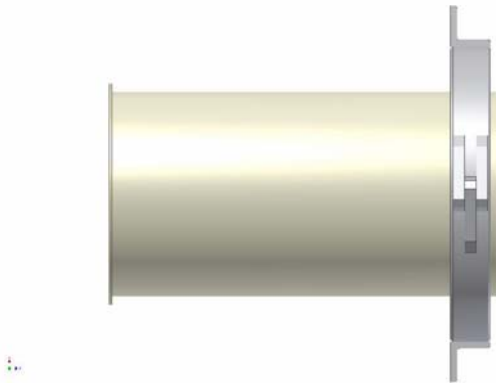
Instructions for flanging device

Only for pipes with a max. wall thickness of 2 mm;
if the wall thickness is 3 mm use welding ends

1. Measure fitting length and mark this on pipe (fitting length + 7 mm for the lip flange). Place edge of flanging device on length marking and draw cutting line around the circumference of the pipe.



2. Push flanging device back and cut the pipe to the correct length with a cutting wheel or saw.
3. Clamp the pipe in the flanging device so that it overhangs by 7 mm.



4. Hammer the edge of the overhanging pipe until it is bent over to form a uniform, sharp-edged lip flange.

